



Ente Ospedaliero
**Ospedali
Galliera**
Genova

Ospedale di rilievo nazionale e di alta specializzazione



L'esperienza del paziente critico a bordo delle navi da crociera

24 settembre 2016, Verona

**XVIII Convegno Nazionale degli Ufficiali Medici e del Personale
Sanitario della Croce Rossa Italiana**

Prof. Paolo Cremonesi

**Direttore S.C. Medicina e Chirurgia d'Accettazione
e d'Urgenza – E.O. Ospedali Galliera (Genova)**

**Presidente Associazione Nazionale
Medici di Bordo della Marina Mercantile**

Onboard emergency

Onboard emergency has some features which characterize it in a **different** way from the one ashore:

1. Limited environment
2. Limited resources
3. Marine Weather Conditions
4. Distance from mainland

In Italy

Ship's Doctor “abilitato”

Ship's Doctor “supplente”

Education and Training

Standard **CLIA** focus on:

**ALS, PALS, ADVANCED TRAUMA,
AIRWAYS MANAGEMENT,
ACUTE CARDIOVASCULAR EVENT,
ACUTE CEREBRAL EVENT,
CONTAGIOUS ILLNESS.**

Single event:

Crew / Guest

Time-Depending disease
(AMI: Acute myocardial infarction,
lctus cerebri,etc.)

Non Time-Depending disease

Onboard emergency

**2 doctors, 3 nurses
Guaranteed emergency response**

Possible disembarkation of the patient:

- 1) Speed up the vessel in order to reach the port for disembarkation**
- 2) Divert the route in order to hasten the disembarkation**
- 3) Call the EMS (Helicopter Medical Service)**

Multiple event:

Crew / Guest

Risk to life event

Non acute event

Queen Mary II

Tonnage 150.000 tons

Length 345 metres

Height 72 metres

Passenger 2620

Crew 1253



Costa Diadema

Tonnage 132.500 tons

Length 306 metres

Height 69 metres

Passenger 4947

Crew 1253



Silver Shadow

Tonnage 28258 tons

Length 186 metres

Passenger 382

Crew 302



Medical center : reception



Chemist



Hospital area for crew



Hospital area for guests



Laboratory



ICU / ISOLATION



The background of the slide is a solid light blue color. At the top, there are several overlapping, wavy bands of different shades of blue, creating a layered, water-like effect.

Ferry Boat

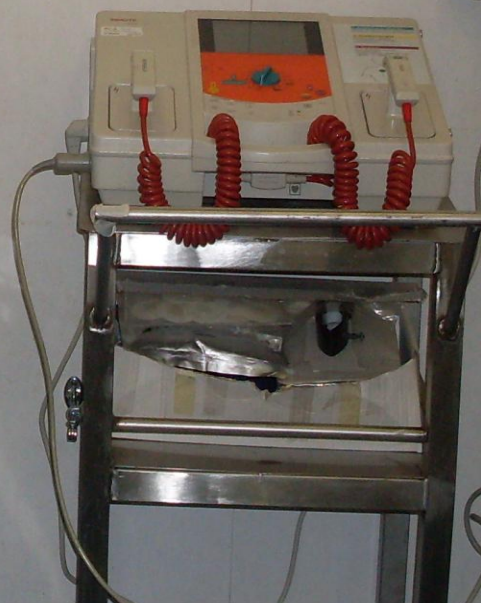


EXIT





TORNO SUBITO
I'LL BE BACK
SOON











Mass Casualty Incident

(MCI) is an incident or event that generates more casualties than can be managed by immediately available resources using routine procedures.

This procedure provides the medical staff with guidelines in case of the large-scale incidents and develops a systematic process, **pre-planned** approach to patient care during such an event.

Triage and Treatment Units

These units are composed by:

Medical First Responder

(Forward Medical Officer and Nurse)

Medical Response Team

(other Doctor and Nurses)

Mass Casualties onboard

Teams involved in the response to a Mass Casualty Incidents

- MASTER
- COMMAND & CONTROL
- BRIDGE TEAM
- ASSESSMENT TEAM / ON SCENE COMMANDER
- MUSTER CONTROL
- DECK AND ENGINE FIRE/DAMAGE CONTROL TEAM
- BOUNDARY COOLING TEAMS
- MEDICAL CONTROL
- STRETCHER TEAMS
- SECURITY TEAM

Medical Control / Stretcher Teams

Medical Control and Stretcher Teams have to include:

2 first aid bags

2 stretchers

2 wheelchairs

Smoke masks with filters for each group member.

The teams will move away from the hospital only after that the **Leader, in the figure of the Chief Ship's Doctor, has received the request for intervention by **Command & Control**.**

Equipment

The Doctors in the Medical Control Team and Cadet Officers in the stretcher teams shall be equipped with UHF radios and shall maintain communication with Command & Control.

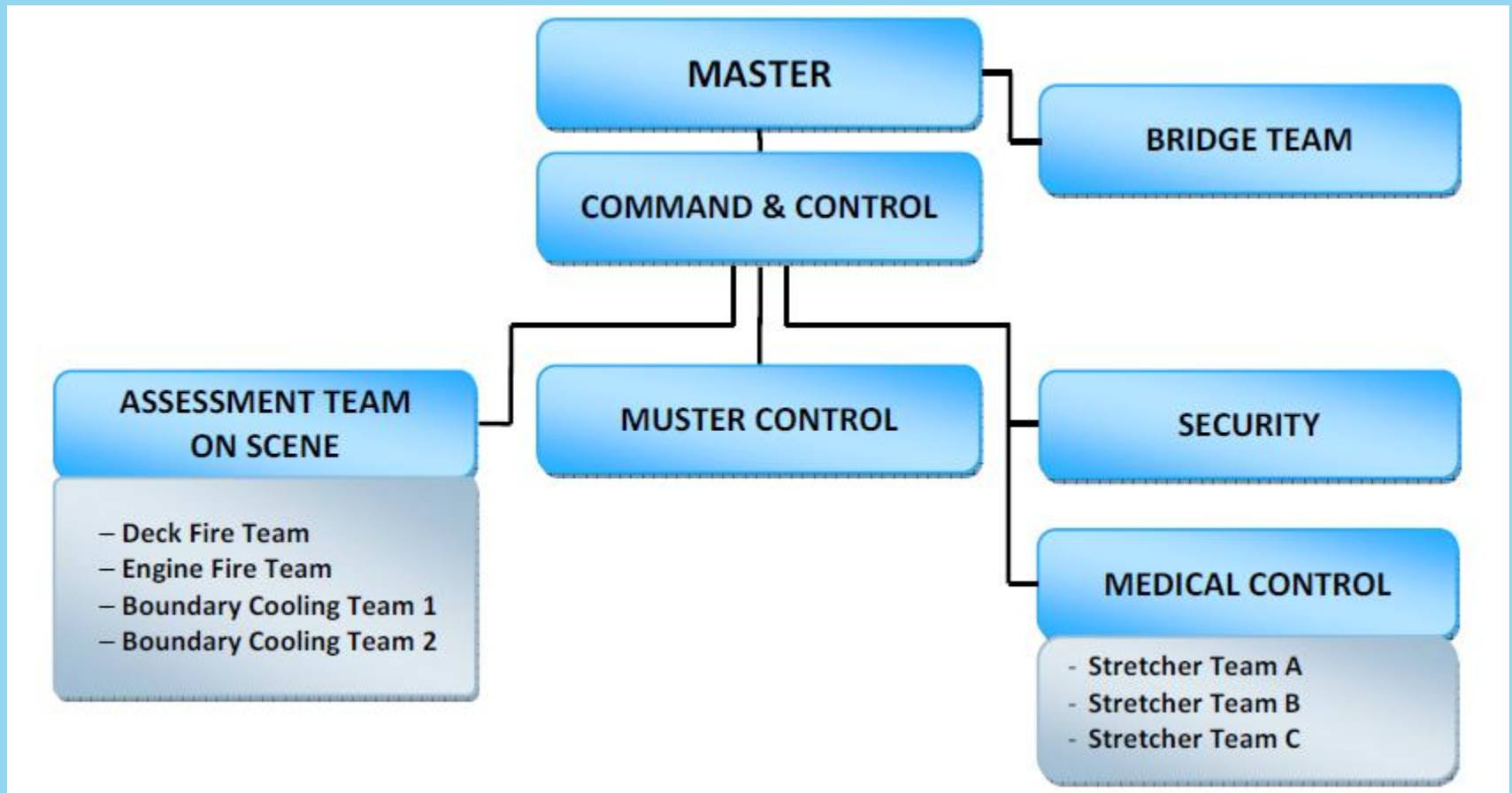
3 teams for Mass Casualty will be created and act as below detailed:

Team "A" consisting of: Deck Cadet Officer -1 Doctor-1 Nurse
–at least 5 Stretcher Bearers

Team "B" consisting of: Deck Cadet Officer -1 Doctor-1 Nurse
–at least 5 Stretcher Bearers

Team "C" consisting of: 1 Nurse-4 equipment carriers (medical oxygen tanks/medical materials)

MCI REPORTING STRUCTURE AND MUSTER LOCATION



Medical Control

Responsible for the **safety** of patients in the shipboard Medical Centre and for the **reception** and **treatment** of anyone sustaining injury as a result of the emergency.

In addition Medical Control must liaise with the Command & Control to ensure that all patients under treatment in the ship's medical facility or in their cabins are **relocated** as needed, if necessary.

Special Needs Teams

Report completeness, coordinate and prioritize order of **evacuation** with Muster Control.

Take into account Handicapped Person Lists and information from other teams.

Assist those passengers to reach assigned **Muster Stations** and ensure they are properly dressed and collect their medication if applicable.

Commander

If the hospital is impracticable, or the Zone where the hospital is located is not accessible, the Medical Control / Stretcher Team Meeting Point shall be in the

“Secondary Medical Centre”:

OTHER POSSIBLE ALTERNATIVE LOCATION:

A safe and as possible adequate area to carry out the appropriate medical activities.

- Grand Bar
- Fire locker

Passenger Volunteers

(incorporating legal and liability provisions)

In compliance with the Italian regulations, passengers volunteers having medical competences with the qualification of **doctor and nurse**, can be engaged - whenever required

Thank you

paolo.cremonesi@galliera.it

presidente@medibordo.it